

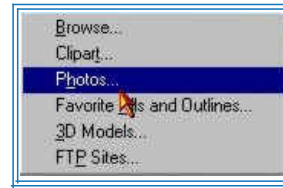
Cutable Floating bitmap

This lesson is designed to show you how to create a cutable floating bitmap. This lesson uses an image from the Corel CD (disk 3) to make it a little easier to understand what you need to do. This process can be done with any image (even with one that has been scanned).

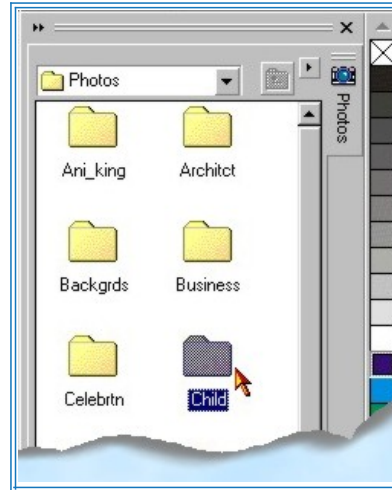
- First, you will need to import the file that will be used. **Select Window** from the top of the screen.

From the drop down menu, select Dockers, Scrapbook and Photos.

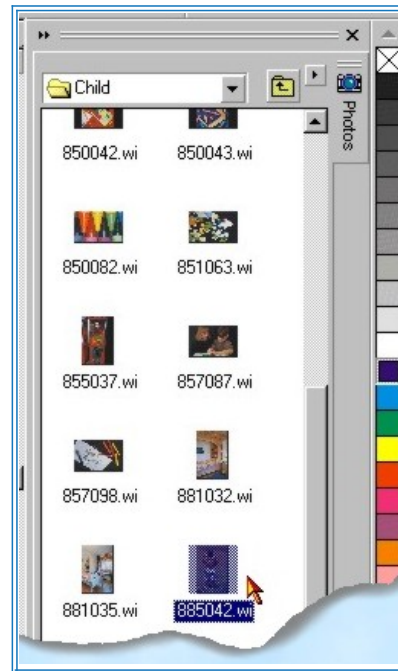
The Scrapbook Dockers will be displayed on the right side of the screen.



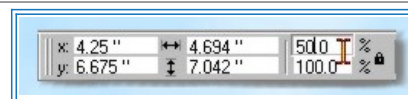
- From this menu, double click on the Child folder and it will open the Child directory.



- Scroll down the list to find the file 885042.wi. It is an image of two boys. Drag the file to the page and the photo will be placed on the page where you release the mouse button.



- With the image on the screen, you will now need to resize it. At the top of the screen in the Property Bar make sure that the lock controlling the scaling is locked, then set the scaling to 50% and press the enter key. The image on screen will redraw at the smaller size.



Note: Normally it is not recommended to resize a bitmap once it is placed on the screen. Because this lesson is using an image from Corel and not a scan you will need to resize it to make it easier to work with. If you are scanning an image it is recommended that you scale the image to the size you need it to output. You should never resize an image or bitmap once it is on the screen in Corel.

- With the image on the screen you are now ready to start to create the free -form shape. You could create the shape using Photo Paint and the masking tools. Depending on your ability with Corel this can take a long time and involves a lot of steps. There is a Project Document that gives you all these steps. We are always looking for ways of making things easier for the user. This lesson shows you another way, with very few steps.

- Select the Rectangle Tool from the Tool Bar. Place the cursor in the upper left corner of the photo. Hold the mouse button down and drag the cursor to the lower right corner of the

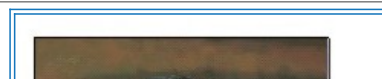
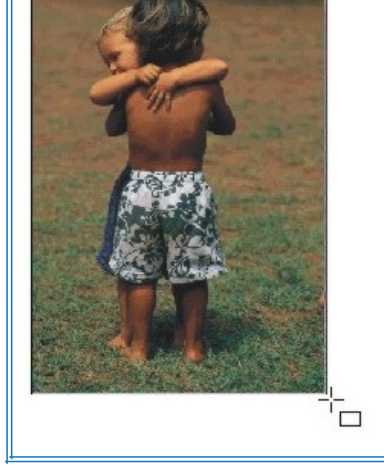
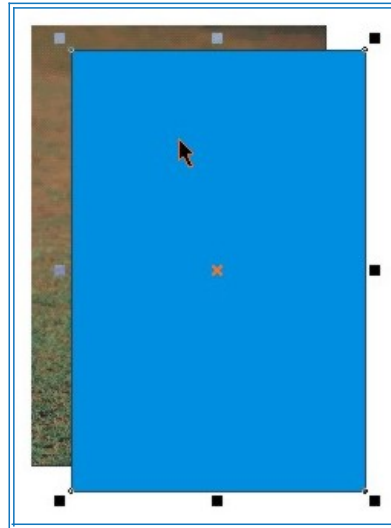
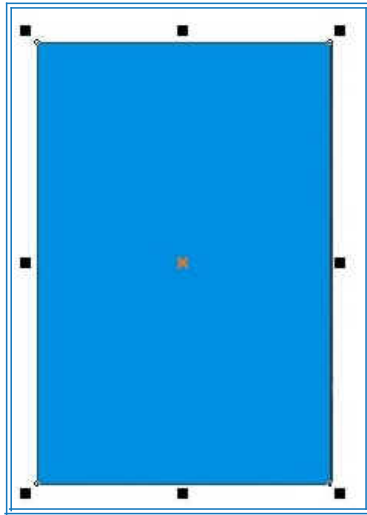


photo and release the button. This will create a rectangle the same size as the photo.



7

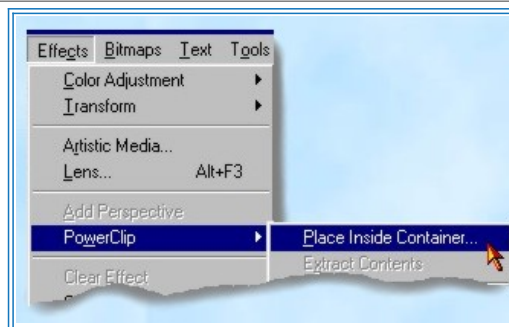
Select a fill color for the rectangle, then move it away from the photo. (You need to be able to select the photo for the next step.)



8

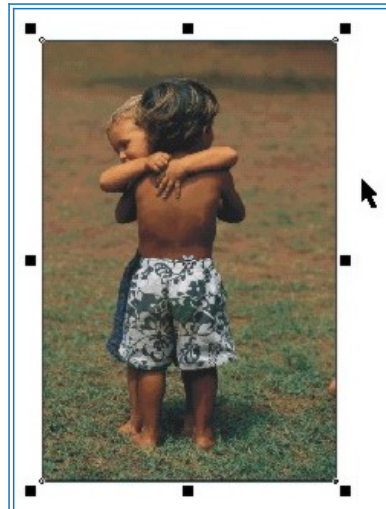
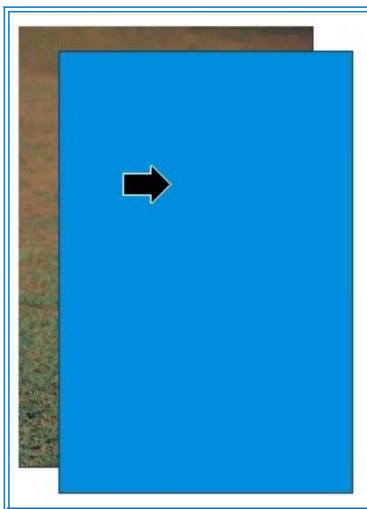
Select the Pick Tool from the Tool Bar. Select the Photo, the Status Line should read "Bitmap on Layer 1".

Select Effects from the top of the screen. From the drop down menu select Power Clip and Place Inside Container from the fly-out.



9

A large arrow will appear on the screen. Select the rectangle that you created. The photo will be placed inside the rectangle.



10

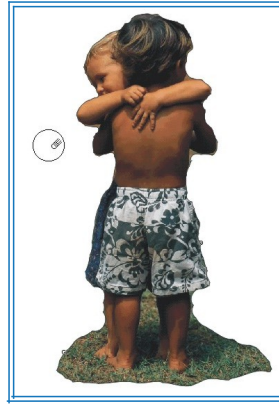
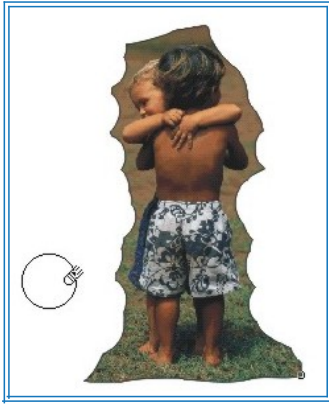
Select the Eraser Tool from the Tool Bar. (The Eraser Tool is found with the other Editing Tools.) Click and hold down on the second tool on the Tool Bar. The Eraser Tool is the third tool on the fly-out.

On the Property Bar, set the size of the Eraser Tool.



11

Start erasing the part of the photo you don't want. It is best to erase small sections at a time. Sometimes, if too large an area is erased a spike can occur across the image. If this happens use the Undo option, then erase a smaller section. Continue erasing until the only the portion of the photo you want is left.

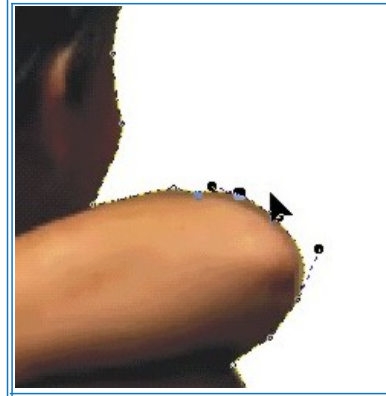


12

You may need to fine tune the shape by using the Node Edit Tool.

The Node Edit Tool is found with the other Editing Tools on the Tool Bar. The Editing Tools are the second set of tools on the Tool Bar. Click and hold to activate the fly-out menu. The Node Edit Tool is the first one on the fly-out.

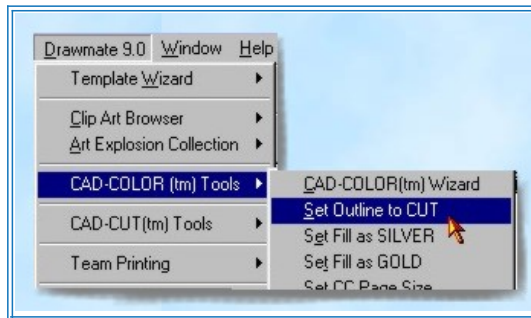
Adjust the shape as needed. If you pull the node out, you will expose more of the photo. If you pull the node in you will be exposing less of the photo.



13

Once the shape is edited as needed, you are ready to add the cut line.

Select the Pick Tool from the Tool Bar. With the photo still selected, select Drawmate from the top of the screen. Select CAD-COLOR Tools from the drop down menu and Set Outline to CUT from the fly-out menu.



14

The program will then add the cut line to the shape and display a message that the cut line has been added.

Select the OK button on the menu.



15

The photo is now ready to send to the CAD-COLOR PC60. If you need to add text to the design, add it before adding the cut line. Depending on what the finished design looks like, you may need to use the CAD-COLOR Wizard to add the cut line.