

IOLINE™



Quick Start Guide



IOLINE 300/350HF SYSTEM

USER NOTICE

Trademarks

Ioline is a trademark of Ioline Corporation. Other product names, logos, designs, titles, words or phrases mentioned within this publication may be trademarks, service marks, or trade names of Ioline Corporation or other entities and may be registered in certain jurisdictions including internationally.

Ioline Disclaimer

IOLINE CORPORATION PROVIDES THIS MANUAL "AS IS" WITHOUT WARRANTY OF ANY KIND, EITHER EXPRESS OR IMPLIED, INCLUDING BUT NOT LIMITED TO THE IMPLIED WARRANTIES OR CONDITIONS OR MERCHANTABILITY OR FITNESS FOR A PARTICULAR PURPOSE. IN NO EVENT SHALL IOLINE, ITS DIRECTORS, OFFICERS, EMPLOYEES OR AGENTS BE LIABLE FOR ANY INDIRECT, SPECIAL, INCIDENTAL, OR CONSEQUENTIAL DAMAGES (INCLUDING DAMAGES FOR LOSS OF PROFITS, LOSS OF BUSINESS, LOSS OF USE OR DATA, INTERRUPTION OF BUSINESS AND THE LIKE), EVEN IF IOLINE HAS BEEN ADVISED OF THE POSSIBILITY OF SUCH DAMAGES ARISING FROM ANY DEFECT OR ERROR IN THIS MANUAL OR PRODUCT.

Limit of Liability Statement

It is the responsibility of the operator of the printer to monitor the performance of the printer and maintain it in proper working condition by following the instructions in this Quick Start Guide and the 300 System User Guide. It is the responsibility of the operator of the printer to follow all safety precautions and warnings that are described in this User Guide. Ioline Corporation is not responsible for injuries that may occur as a result of unsafe use. Ioline Corporation is not responsible for substandard operational performance as a result of failure to maintain the printer as described in Quick Start Guide and the 300 System User Guide.

© 2003-2006 Ioline Corporation. All rights reserved. This manual may not be copied, photocopied, reproduced, translated, transmitted or converted to any electronic or machine-readable form in whole or in part without prior written approval of Ioline Corporation.

Service and Support

If you require assistance with an Ioline product, your local Ioline dealer or authorized service center is ready to help. Support information is also available 24/7 on the Ioline Web site—or you may contact Ioline directly:

Ioline Corporation
14140 NE 200th Street
Woodinville, Washington 98072 U.S.A.

Ioline Customer Service Department
Monday through Friday
7:00 A.M. - 5:00 P.M. U.S. Pacific Time
Voice: 1.425.398.8282
Fax: 1.425.398.8383
techsupport@ioline.com
www.ioline.com



IOLINE 300 SYSTEM
Quick Start Guide

IMAGES & ILLUSTRATIONS

Figure 1.	Front view of the 300 System and a close-up back of the machine	xiv
Figure 2.	Unpacking the cutter	15
Figure 3.	The 301 Software installation screen.....	16
Figure 4.	The Ioline software icons will be placed on the desktop	16
Figure 5.	Install the drivers, then insert the USB key into the PC	16
Figure 6.	Locations of the power cord outlet, serial port and USB port	17
Figure 7.	Rear view of the computer parallel and serial ports	17
Figure 8.	Adhesive sheet and backing material guidelines	18
Figure 9.	Align the adhesive sheet with the L-shaped Tray alignment marks	18
Figure 10.	Apply the material on top of the Adhesive Sheet on the Tray	19
Figure 11.	Blade selection guidelines	20
Figure 12.	Installing the blade in the blade holder	20
Figure 13.	A properly adjusted blade	20

TABLE OF CONTENTS

SAFETY & CAUTIONS

VISUAL REFERENCE GUIDE

CHAPTER 1	Assembly & Set-up	
	Assembly	15
	Unpacking the 300 System	15
	Prepare the Production Area	15
	Step 1: Install the 30I Software	16
	Step 2: Connect the cutter to the PC	17
	Step 3: Install and adhesive sheet	17
	Step 4: Install the material and tray	19
	Step 5: Select and adjust the blade	20

INDEX

This page intentionally left blank.

The 300 and 350HF are powerful cutting machines. To avoid serious injury:

- Keep fingers, loose clothing and any objects that might get tangled in moving parts away from the cutter during operation.
- Before using, make sure that the cutter has 9-in of clearance in front and behind the table to give the moving tray adequate space.

VISUAL REFERENCE GUIDE

KEY

- | | |
|--------------------------------------|-----------------------------------|
| A. Left end cover | H. Origin (starting point) |
| B. Dust cover | I. Thumb nuts (2) |
| C. Carriage (design may vary) | J. Table (non-removeable) |
| D. Adhesive sheet, mounted | K. Leg (2) |
| E. Right end cover | L. Power switch |
| F. Keypad | M. Serial port |
| G. Tray (removeable) | N. USB port |
| | O. Power connector |

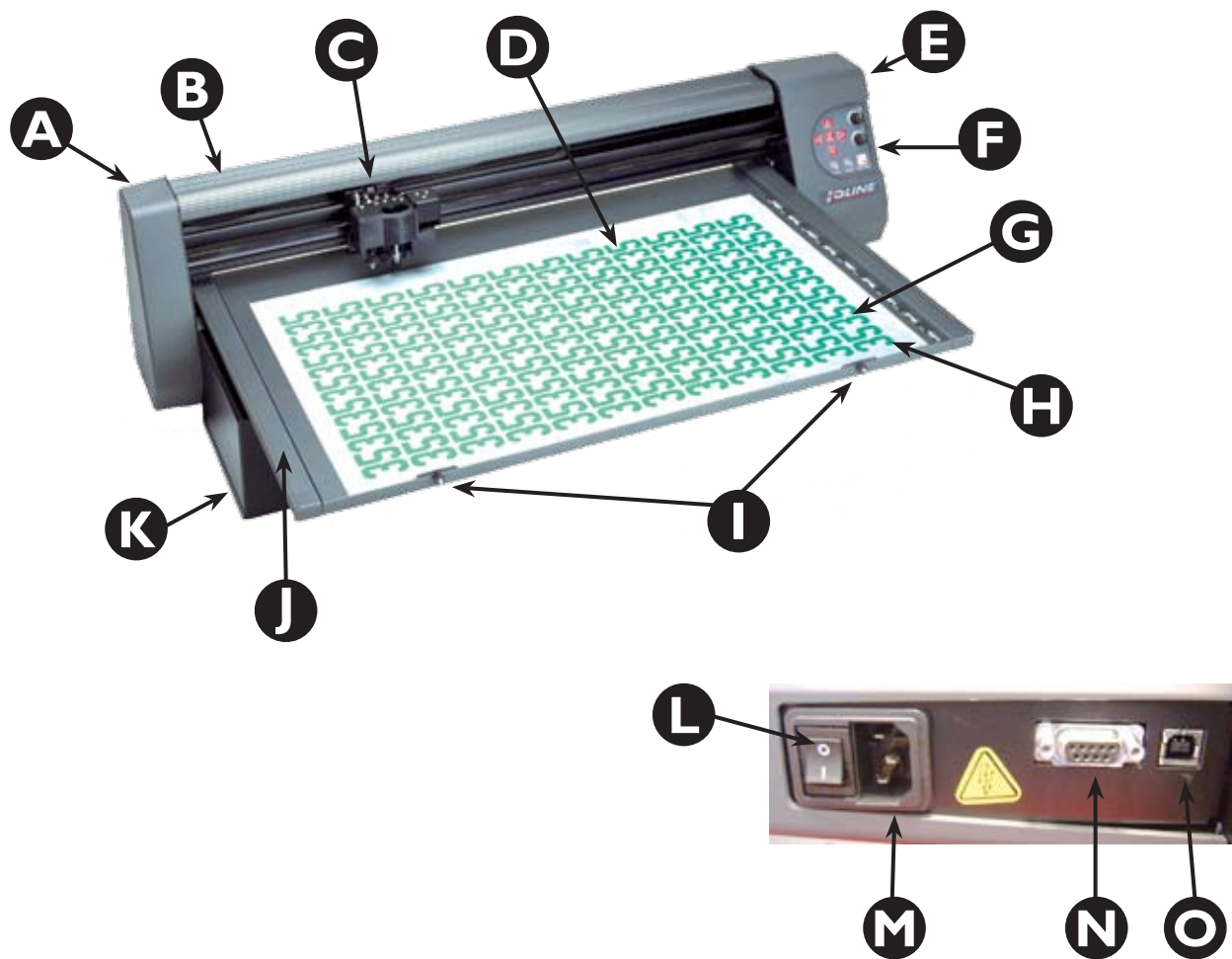


Figure I. Front view of the 300 System and a close-up photo of the port and power switch on the back of the machine.

Assembly

This *Quick Start Guide* shows how to assemble and set up the Ioline 300 System. Consult the *300 System User Guide* on the CD-ROM for more detailed information about installation and operation. Use the provided Adobe® Acrobat® viewer to read and cut the *User Guide* if necessary.

Unpacking the 300 System

Follow the enclosed instruction sheet to remove the cutter and **Accessory Kit** from the box. To avoid injury, always lift the cutter with two people. Check the **Packing List** and save all packing materials.

1. Set the cutter on a stable surface.
2. If you purchased an extra tray, lift it off the 300's **Table** and set it aside.
3. Remove the 4 screws holding the **Table** in place for shipping.
4. Cut the tie wrap that hold the carriage in place and remove all the packing material. (See **Figure 2**.)

Prepare the Production Area

Clean the table top and clear any obstacles. Place the cutter 9-inches away from the wall to allow the material tray to move freely toward the back.

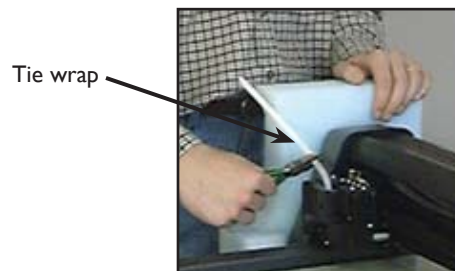


Figure 2. (Left) remove the shipping screws from the **Table** and (right) cut the shipping tie wrap holding the **carriage**.



Note

Save all packing materials.

CAUTION



The 300 and 350HF Systems are heavy and could cause injury if they fall. A minimum of two people are required to safely unpack the cutters and attach them to the stand.

Step 1: Install the 301 Software

1. Insert the 301 Software CD-ROM (packaged in the **Accessory Kit**) into the CD-ROM drive.
2. The installation program should automatically start. If it does not, go to **Start Menu>Run**. Click on **Browse** and choose the CD-ROM drive (often drive **D:**). Select *iosetup.exe*, then **Open** and **Run**.
3. Follow the self-guided installation instructions to install the **Ioline Control Center**, **301 Software**, **Acrobat Reader**, and all manuals. (See **Figure 3**.)

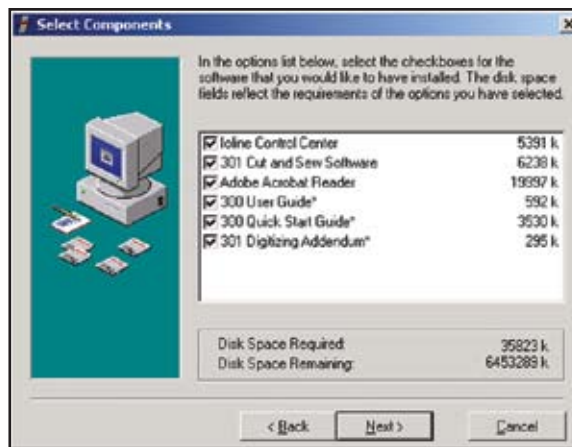


Figure 3. The 301 Software installation screen.

4. When prompted, answer 'Yes' to all questions about installing drivers.
5. The installation program will place icons on the desktop for the 301 Software and Ioline Control Center. (See **Figure 4**.)



Figure 4. The Ioline software icons will be placed on the desktop.

6. Power off the computer.
7. Connect the Ioline 301 Software key to the USB port (**Figure 5**).

Note

Older 300 and 350HF Systems used a parallel key rather than USB, as shown below:

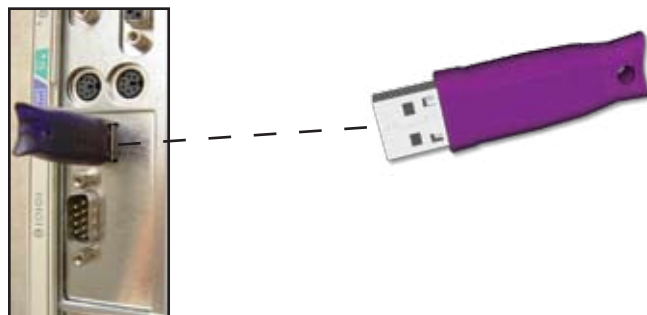


Figure 5. Install the drivers, then insert the USB key into the PC.

Step 2: Connect the cutter to the PC

1. Insert the power cord into the power outlet on the cutter, then plug it into a wall socket or power strip (**Figure 6**).



Figure 6. Locations of the power cord outlet, serial port and USB port on the rear panel of the cutter.

2. Connect the serial cable supplied in the **Accessory Kit** to the cutter.
3. Verify that the cutter is positioned at least 9 inches away from the wall or other objects, then turn the cutter power on. The **Table** will move backward and the carriage to the right. Wait for the keypad light to turn **red**, indicating that the cutter has finished initializing.
4. Connect the serial cable to the serial port on the computer. Use a 9-25 pin adapter if required.
5. The cable configuration between the cutter and computer should resemble the photo in **Figure 7**.
6. Turn the computer power on.

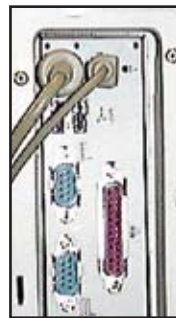


Figure 7. Rear view of the computer parallel and serial ports.

Step 3: Install and adhesive sheet

1. Check the light on the cutter keypad and press **Start/Stop** if it is not red. Use the **Arrow** keys on the keypad to move the **Table** all the way forward.
2. If the tray is installed in the **Table**, loosen the thumb nuts and remove the tray by lifting up in the front and pulling forward. Place the tray on a stable surface.
3. Choose an **Adhesive Sheet** (and backing material, if required) that are appropriate for the material you plan to cut. (See **Figure 8** to identify proper sheet and backing types. More information about choosing **Adhesive Sheets** is also located in the *300/350HF System User Guide*.)

High Tack (HT)	Scrim felt, leather, etching and stencil board. Order 107076
Medidum Tack (MT)	A general purpose sheet, use with most twills. Order 107295
Low Tack (LT)	Heatseal-backed or thin and fragile materials. Order 107093
Ultra Low Tack (ULT)	Paper or paper-backed materials. Order 108300
2-sided Backing (2S)	Adds adhesive to non-backed materials. Order 107089
1-sided Backing (1S)	Stabilizes thin materials. Order 106277

Figure 8. Adhesive Sheet and backing material guidelines.

- Peel the backing paper off of one side of the **Adhesive sheet**. With the exposed side facing the **Tray**, align the corners of the sheet with the engraved "L" shaped marks in the **Tray** (**Figure 9**).



Figure 9. Align the adhesive sheet with the L-shaped **Tray** alignment marks.

- Smooth the adhesive sheet down until all bubbles are removed. Leave the paper cover on the top of the adhesive sheet until ready to apply material for cutting.

Step 4: Install the material and tray

1. Remove the cover from the **Adhesive Sheet** and carefully apply fabric to the **Tray**. Smooth all bubbles out of the material. (See **Figure 10**.)

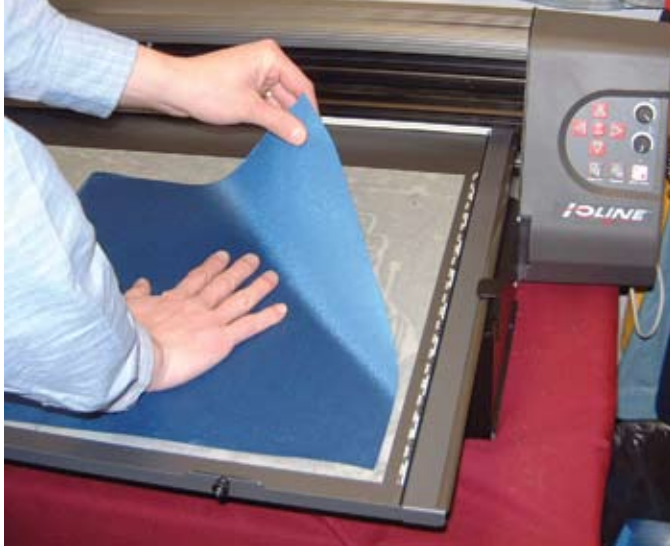


Figure 10. Apply the material on top of the Adhesive Sheet on the **Tray**.

2. Slide the **Tray** onto the **Table** with the thumb nuts facing the front of the machine. Make sure the rear lip of the **Tray** fits tightly under the white strip in the rear of the **Table**. The thumb nut posts should drop smoothly into the slots on the front of the **Table**.
3. Press the **Tray** down into the **Table** and tighten the thumb nuts.
4. Use the **Arrow** keys on the keypad to position the carriage and **Table** so that the blade is in lower right corner of the **Table**. This is where cutting will start.
5. Press *Set Origin* on the keypad. The light on the keypad will turn **green**.

CAUTION

The blades are very sharp and the tip is fragile. Use caution when inserting them into the blade holder.

**Note**

You can substantially extend the life of the blade by making sure to adjust it to the proper depth for the material you are cutting and setting down-force pressure as low as necessary to get a clean cut. This also reduces the possibility of **Tray** damage.

Step 5: Select and adjust the blade

1. Find one of the included blades in the **Accessory Kit**. **Figure 11** shows blade information.

30° Blade 0.094-in offset	Reduces fraying and pulling on fragile or flexible materials. 300: Order 321 (PN 107076) 350HF: Order 324 (PN 107418)
45° Blade 0.094-in offset	General purpose blade. Cuts some thick materials. 300: Order 322 (PN 106989) 350HF: Order 325 (PN 107419)
60° Blade 0.094-in offset	For cutting thick and stiff materials. 350HF: Order 326 (PN 107420)

Figure 11. Blade selection guidelines.

2. Unscrew the foot (**Figure 12**) from the blade holder.
3. Insert the blade into the blade holder (**Figure 13**). It will resist at first then slide freely to a hard stop when properly inserted.
4. Gently turn the foot onto the blade holder until just before the tip of the blade protrudes from the opening in the foot. Insert the blade holder in the jaw then tighten the clamp.
5. Follow the steps in the *300/350HF System User Guide* to adjust the blade exposure and force. **Note: this step is very important!**
6. The cutter is ready to use!

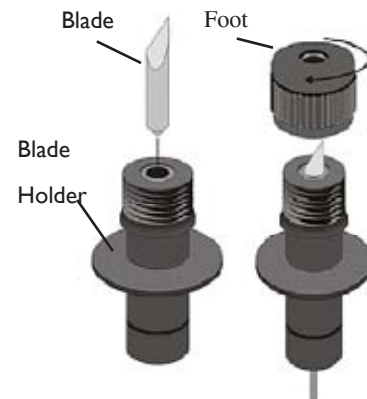


Figure 12. Installing the blade in the blade holder.

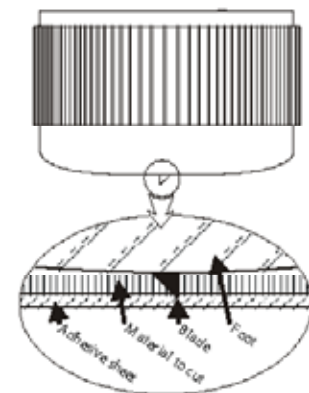


Figure 13. A properly adjusted blade.

INDEX

Symbols

301 Software x, xi, 16
Installation 16

A

Accessory Kit 15, 16, 17, 20

Adhesive Sheet x, xiv, 17, 19
Aligning on the tray 18
Guidelines 18

Arrow keys 17, 19

Assembly & Setup 15
Clearance xiii

B

Backing material x, 17, 18
Guidelines 18

Blade holder x, 20

Blades

Adjusting xi, 20
Adjusting the blade exposure 20
Extending the life of 20
Installation in blade holder 20
Selection guidelines 20

C

Carriage xiv, 15, 17

CD-ROM 15, 16

Control Center 16

D

Digitizing software. *See* 301 Software

Drivers x, 16

I

Icons 16

K

Key. *See* **USB key**

Keypad xiv

L

Leg xiv

M

Material 19

O

Operation 15

Origin xiv, 19

P

Packing materials 15

Parallel key 16

Ports x, 17

Power connector xiv

Power switch xiv

S

Safety & Cautions xiii, 15, 20

Serial port xiv

Set Origin 19

Software. *See* 301 **Software** or **Control Center**

Start/Stop key 17

T

Table xiv

Thumb nuts xiv, 17, 19

Tray x, xiv, 18, 19, 20
Avoiding damage 20

U

USB key x, 16

USB port x, xiv, 16, 17

User Guide viii, 15, 17, 20